

Pequea Preschool is a Fun place to grow...



Spiritually
Academically
Emotionally
Physically
Socially

Our Mission:

Pequea Preschool is a fun place to grow. Our trained staff provides young children with hands-on experiences that enhance their spiritual, academic, emotional, physical, and social development. We assist the children in becoming the individuals God has intended them to be.

WE ARE:

*God-Honoring
*Fun

*Educational
*Safe

**Providing quality Christian Education
since 1996!**



2-1/2 Yr. Old Program

Our 2-1/2 year old program offers learning experiences to build skills and confidence for your preschooler through games, songs, simple stories, rhymes, movement and art. We use God's World Bible Curriculum.

Maximum enrollment of 10 students



3 Yr. Old Program

We focus on social development with the threes, like taking turns, sharing and following directions. They will work on large and fine motor skills, shapes, colors and sorting. We use God's World Bible curriculum.



4 Yr. Old Program

Our four-year-olds will be writing their names, numbers and ABCs. We also work on rhyming, opposites, and sounding out letters. There is a lot of cooking, crafts and reading. ABC Bible Heroes curriculum is used throughout the year.



Pre-K Program

The Pre-Kindergarten class uses the Essentials Pre-school curriculum. This offers children: activity centers, journaling, science, sequencing, music and much more. The children will have many hands-on experiences that will enhance their spiritual, academic, emotional, physical and social development.



Our Foundational Verse

Let the little children come to me, and do not hinder them, for the kingdom of God belongs to such as these. And he took the children in his arms, put his hands on them and blessed them.

Mark 10: 14,16

For more information please

call Missy Eshbach,

Preschool Director,

at

717.872.5679

or visit us at:

www.pequeapreschool.com

Maximum enrollment of 12 students per class

Updated 12/2009

Class Schedule

September 13th, 2010 - May 6th, 2011

Morning classes run 9:15 -11:30 am

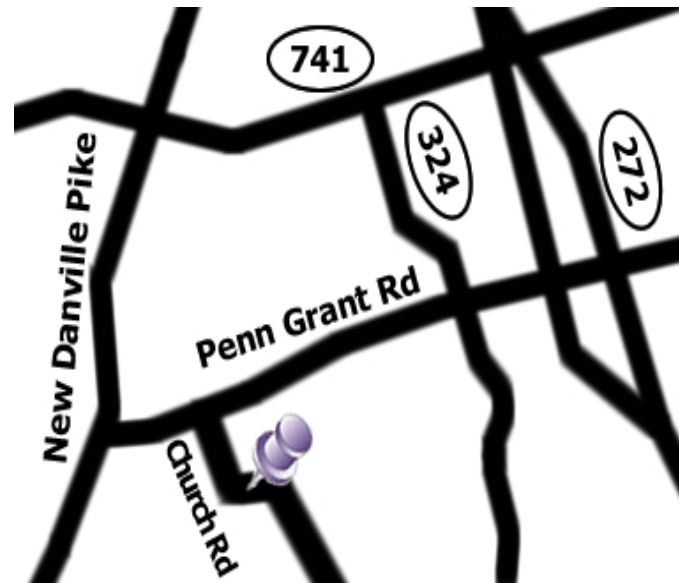
Afternoon classes run 12:45-3:00 pm

All are morning classes unless otherwise noted.

			Age Requirements
2-1/2 year olds	Tues.	\$260	2 by Mar. 1, 2010
3 year olds	Wed.	\$260	3 by Sept. 1, 2010
	Wed./Fri.	\$510	3 by Sept. 1, 2010
	Tues./ Thur.	\$510	3 by Sept. 1, 2010
4 year olds	Tues./ Thur.	\$510	4 by Sept. 1, 2010
	Mon./Wed./Fri.	\$735	4 by Sept. 1, 2010
	Afternoon Tues. / Thur.	\$510	4 by Sept. 1, 2010
Afternoon Mon./Wed./Fri.	\$735	4 by Sept. 1, 2010	

*Pre-K Mon.- Thur. \$1,015 4 by Mar. 1, 2010
 (*Child must have previous pre-school experience.)

***Please call to check about class availability**



Directions

From Willow Street:

Go west on Penn Grant Road to the 324 intersection. Go through the intersection and turn left onto Church Road.

From Pequea:

Go North on 324. Turn left onto Penn Grant Road and then turn left onto Church Road.

Pequea Church

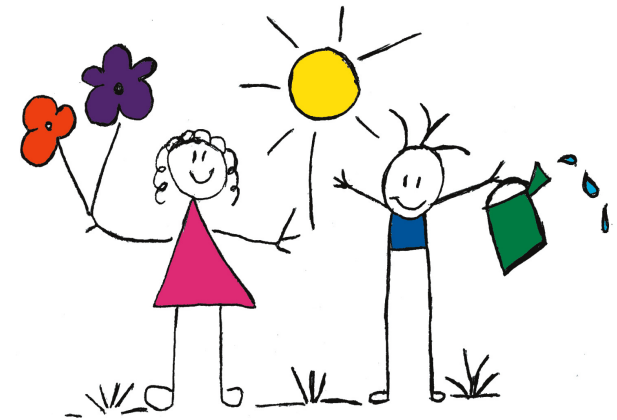
Located between Conestoga and Willow Street in the
 Penn Manor School District
www.pequeachurch.com

Pequea Preschool

IT'S A FUN PLACE TO GROW!

Celebrating our 15th Year!

2010-2011



**OPEN HOUSE AND
 1ST DAY OF ENROLLMENT**

TUESDAY, JAN. 19

9:30-10:30 A.M.

AND

6:30-7:30 P.M.

DROP IN ANYTIME!

Proud Member of the
 Association of Christian Schools International

Pequea Church, 40 Church Road

Lancaster, PA 17603

***** Financial Tidbits *****

- ◆ Snack fee & fieldtrip fees are included in tuition.
- ◆ A \$25 discount is applied to the second and third child's tuition if more than one child from family is enrolled at a time.
- ◆ We offer several payment plan options.
- ◆ Scholarship monies are available. Interested families should submit a written request to the director upon registration.
- ◆ A separate non-refundable registration fee of \$40 is due with registration form if mailed by May 1, 2010 (\$50 after May 1).
- ◆ Pequea Preschool is a nonprofit organization.